



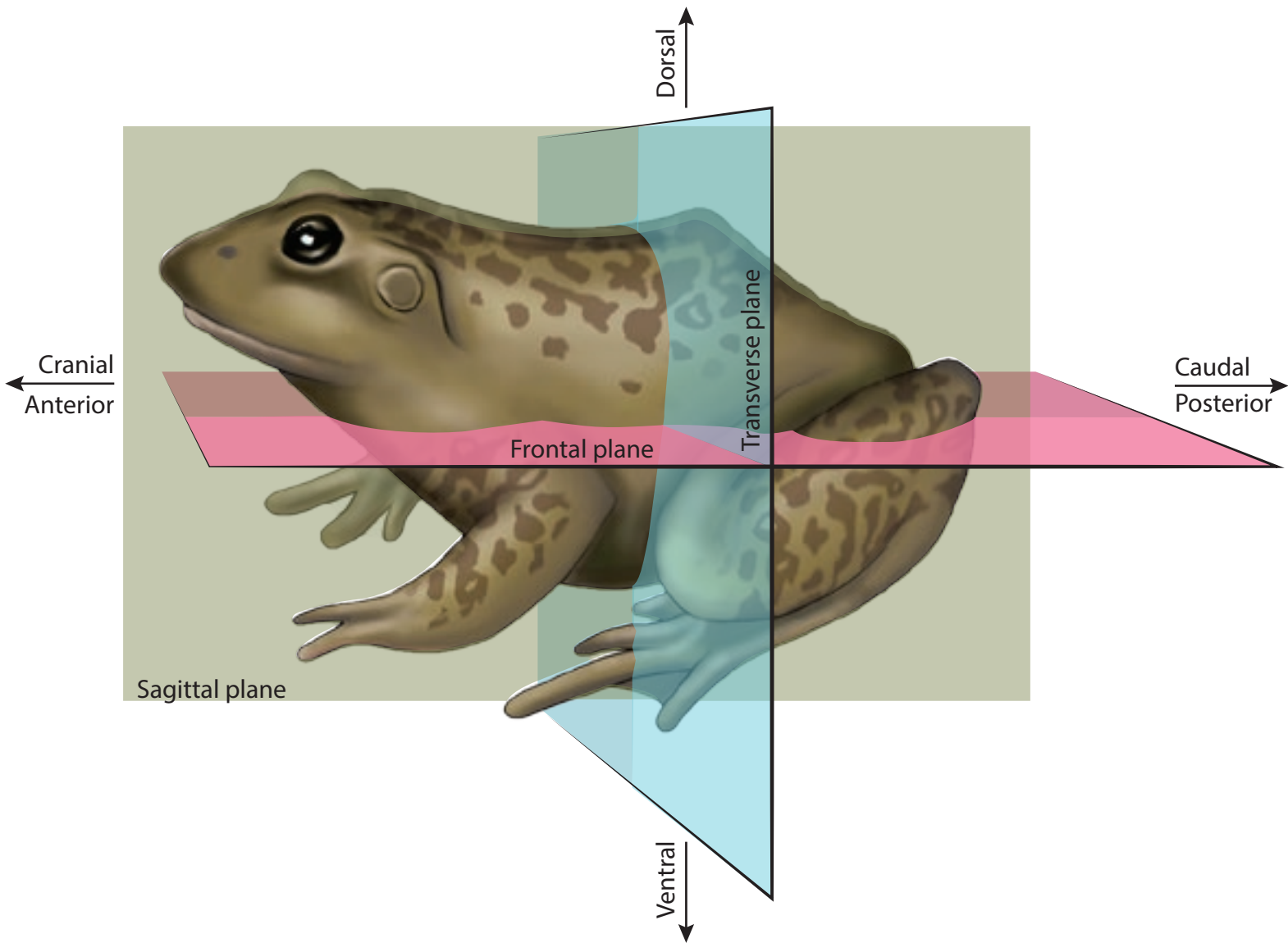
**ward's**  
**science+**

## Frog Visual Dissection Guide

Illustrated by Leah Hofgesang

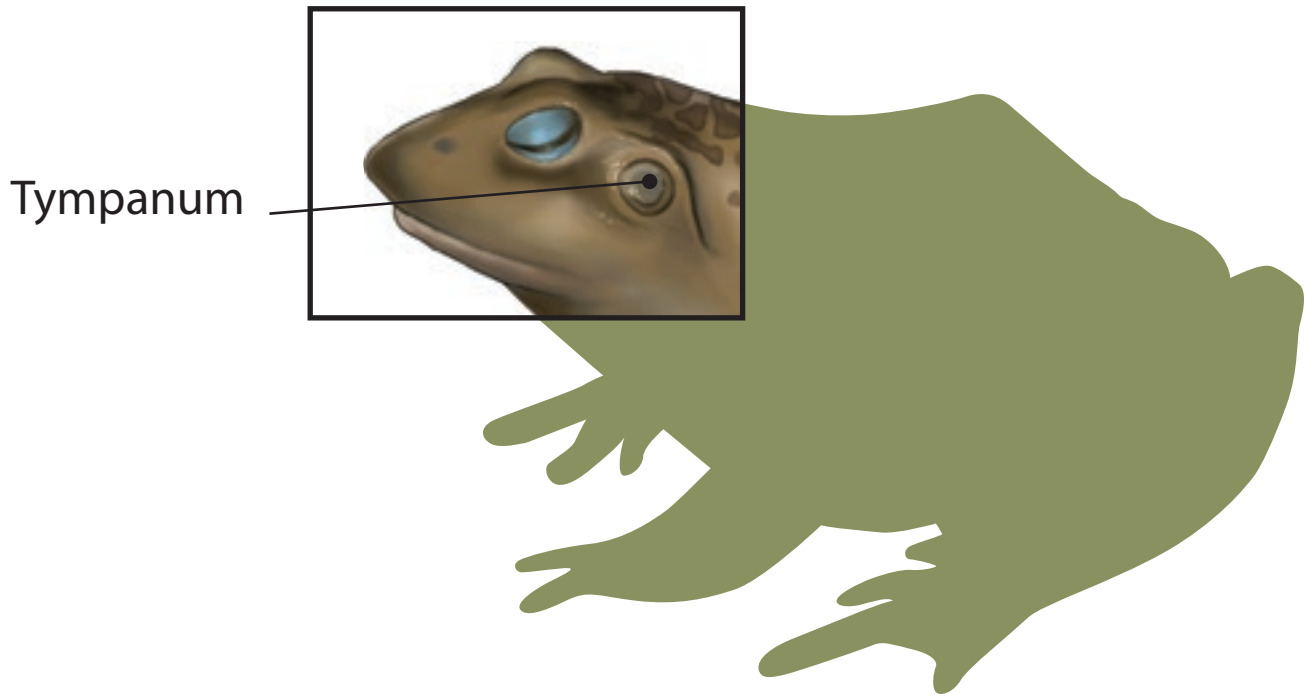


# Orientation

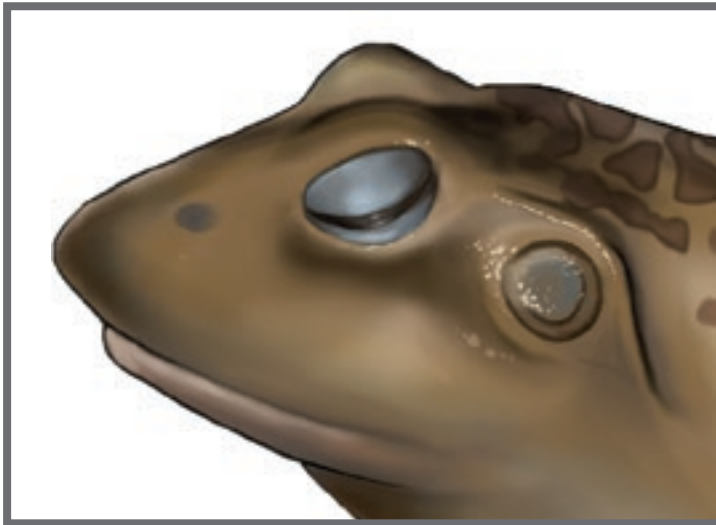


# Tympanum Size

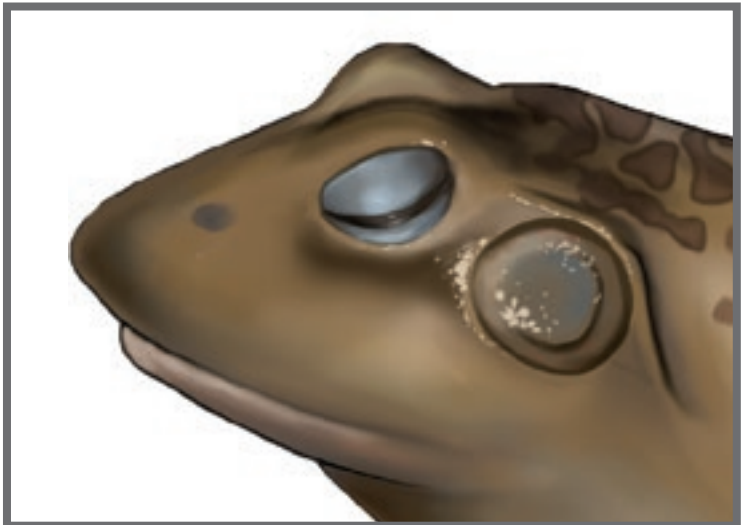
Distinguish Gender from External Features



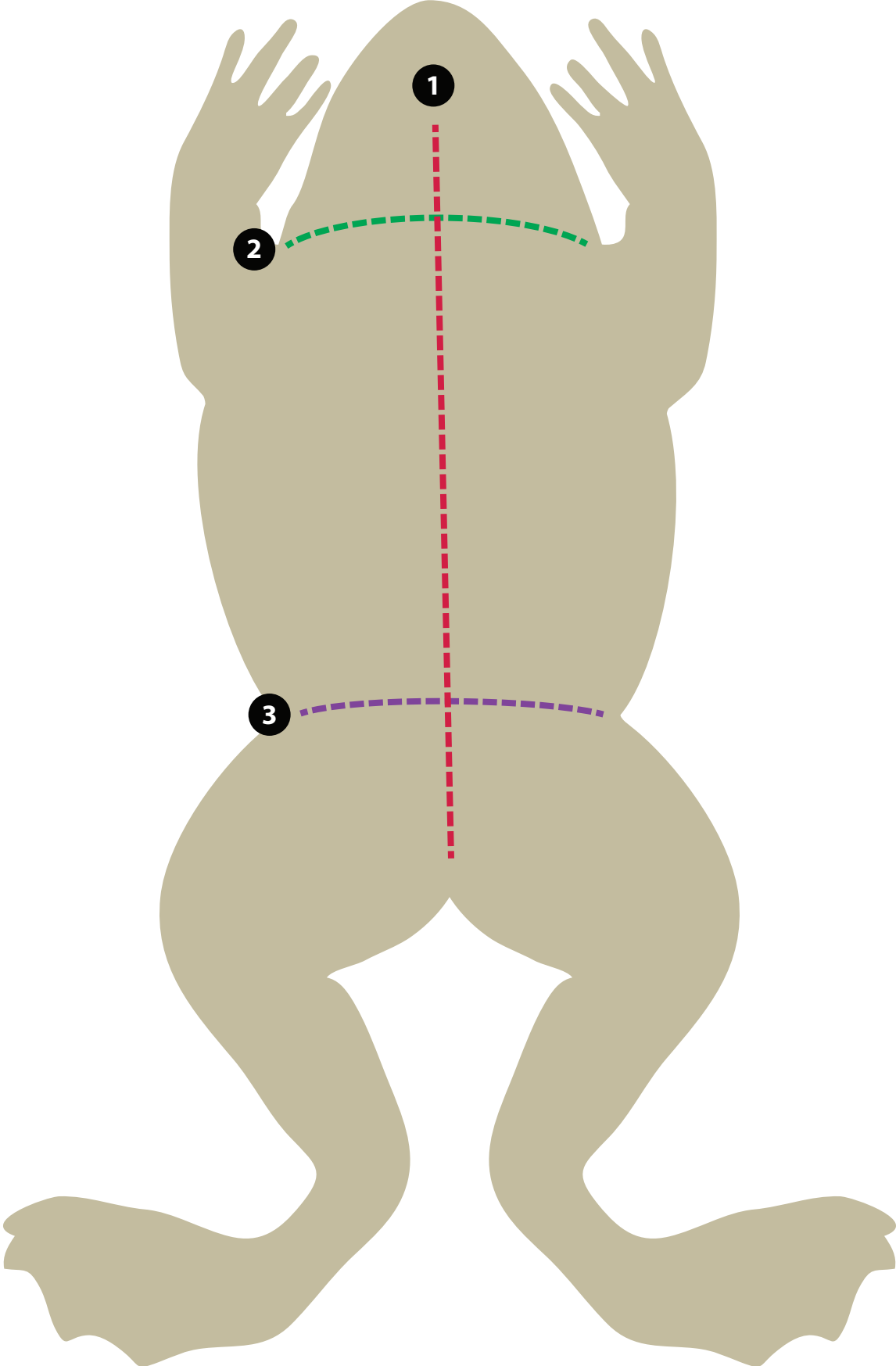
Female



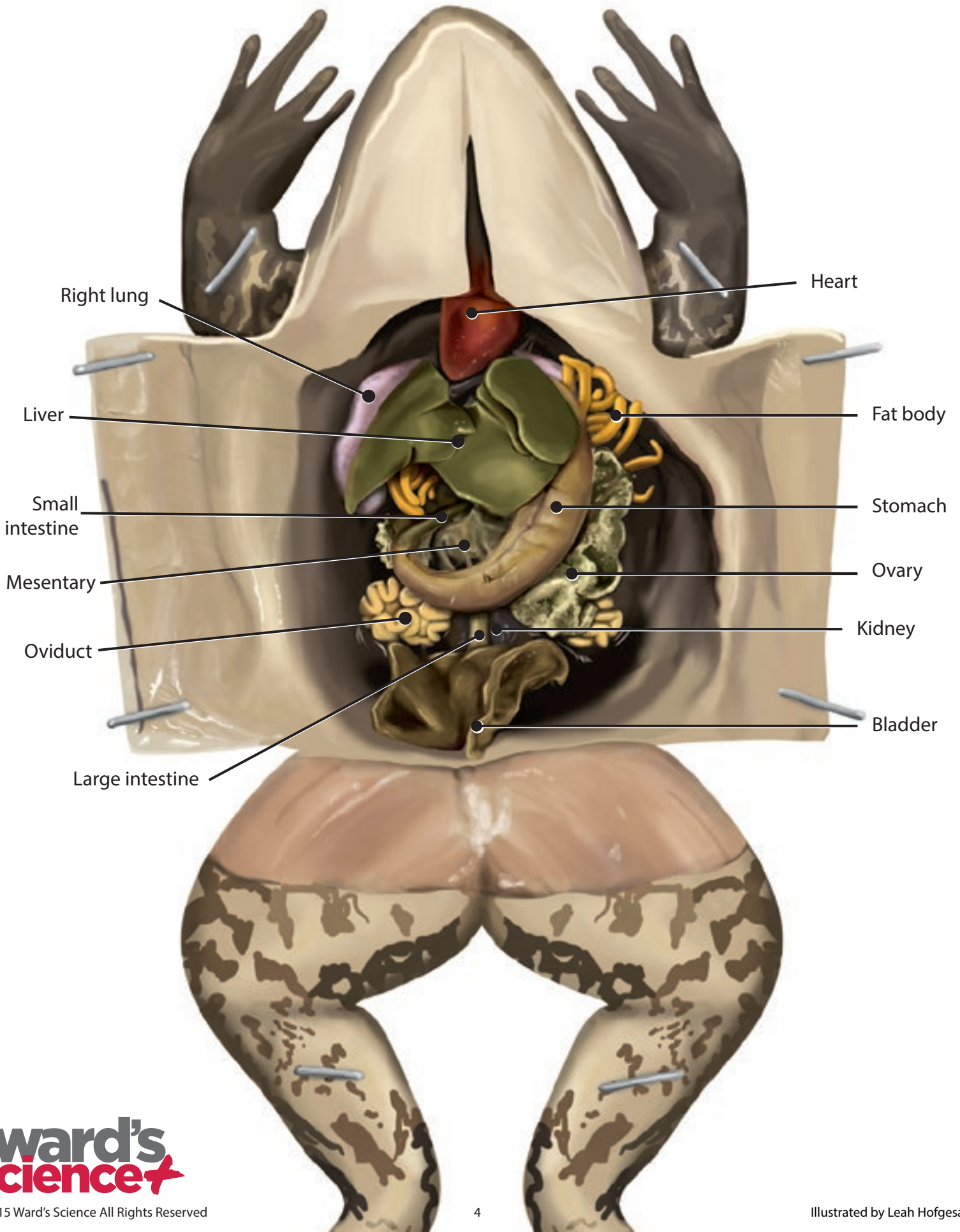
Male



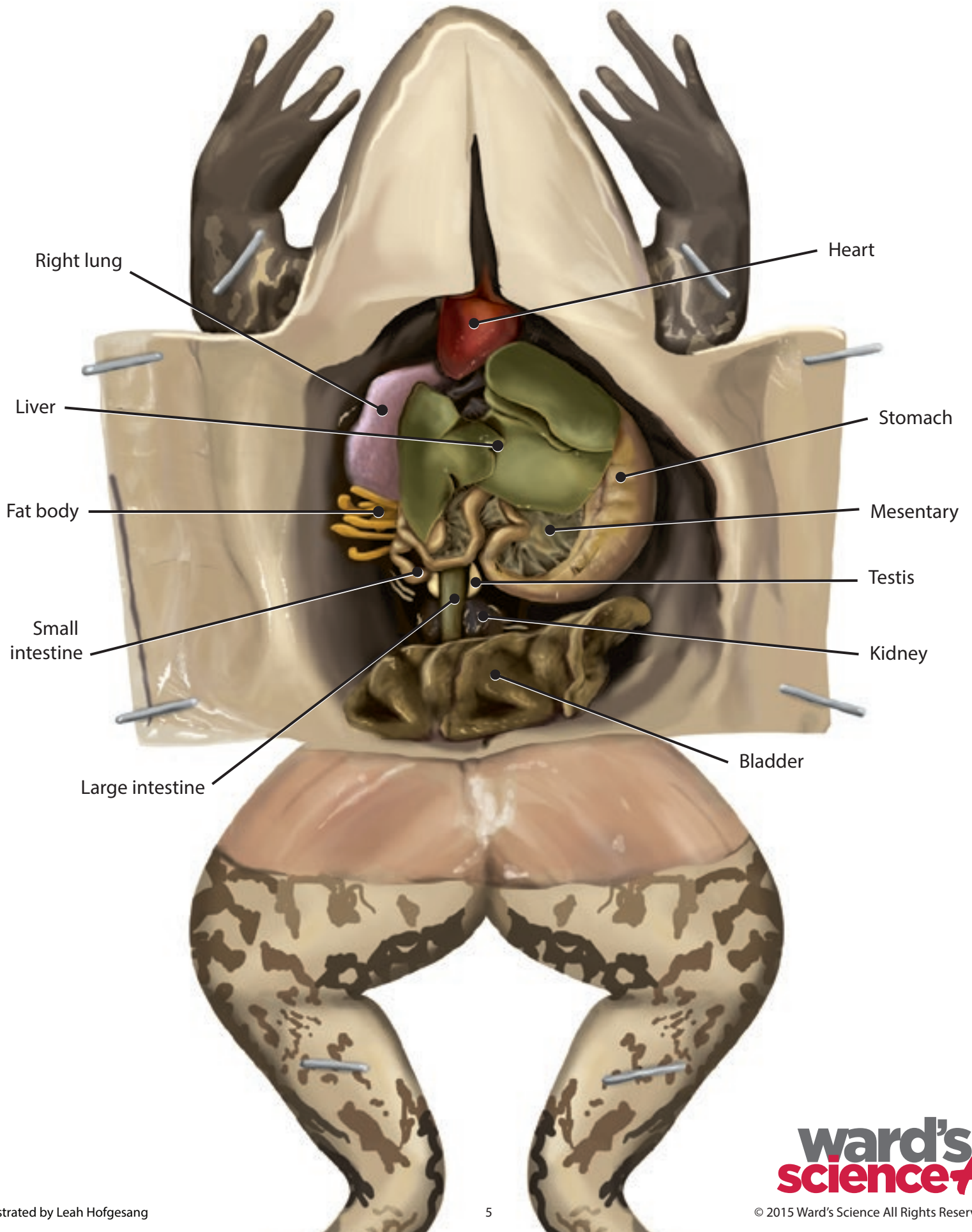
# Incisions



# Female Internal Organs

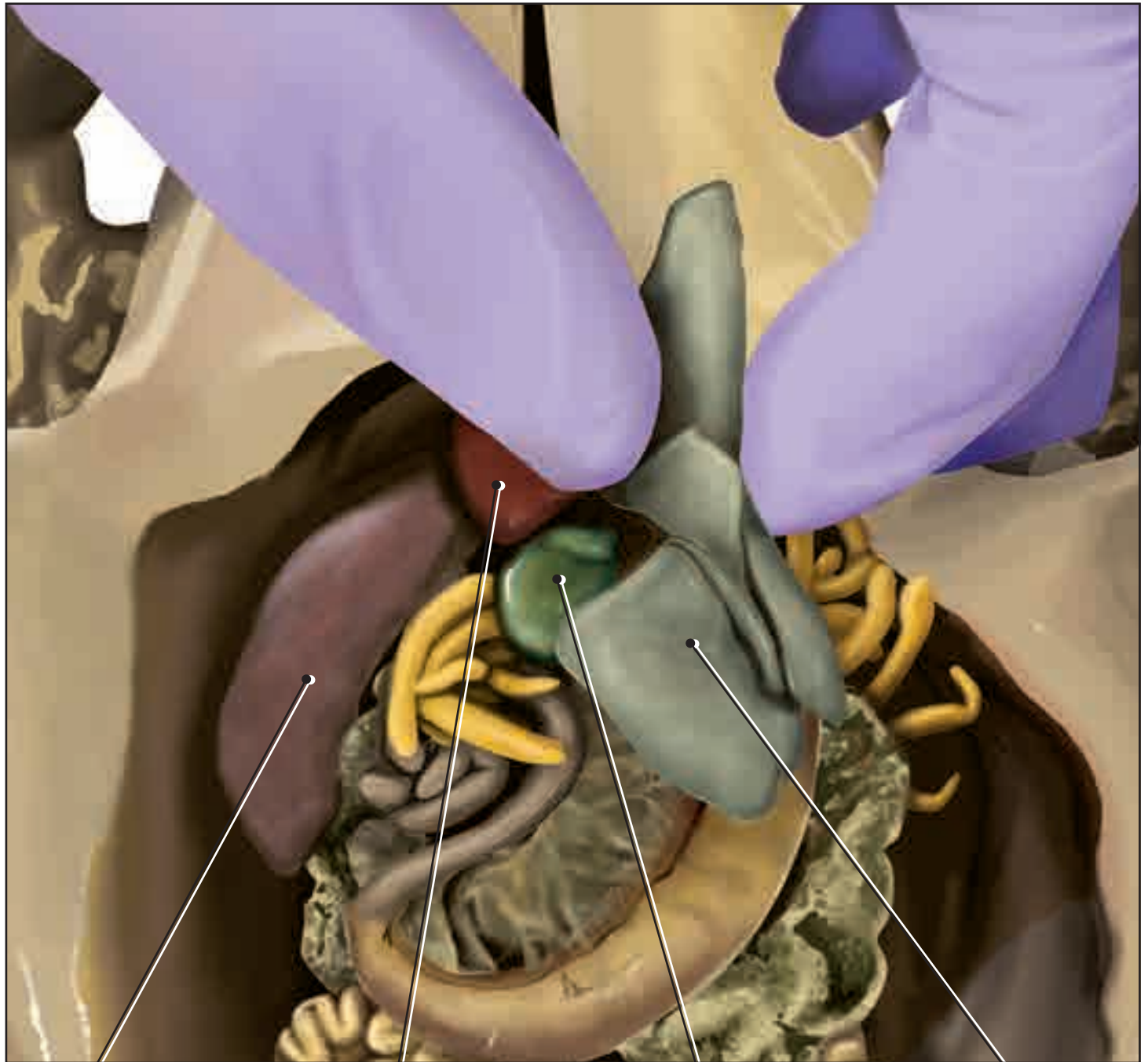


# Male Internal Organs



# Procedure | View the Gallbladder

Reflect the liver superiorly.



Right lung

Heart

Gallbladder

Liver

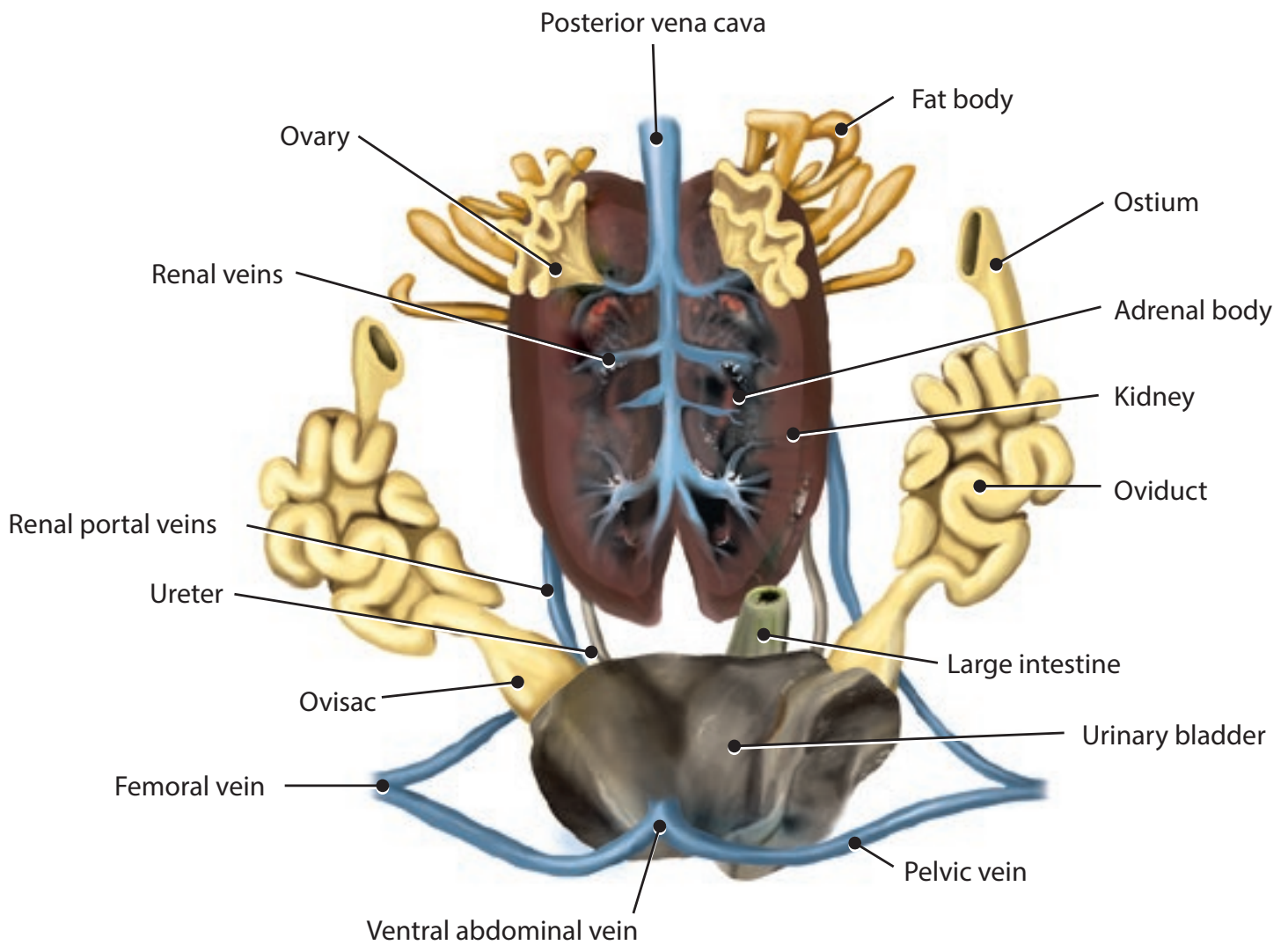
# Procedure | View the Kidneys

Cut large intestine and peritoneum.

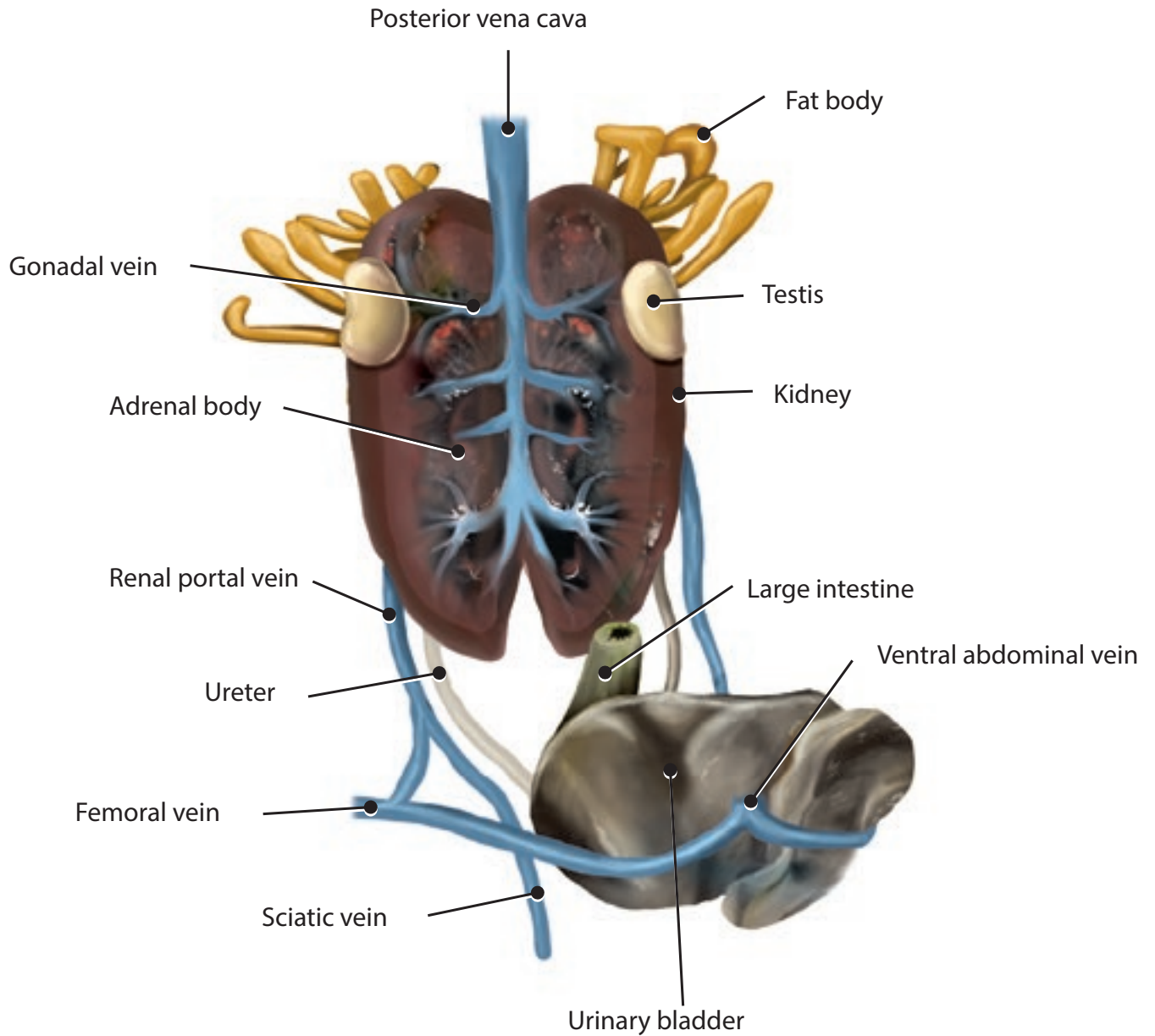




# Female Urogenital System

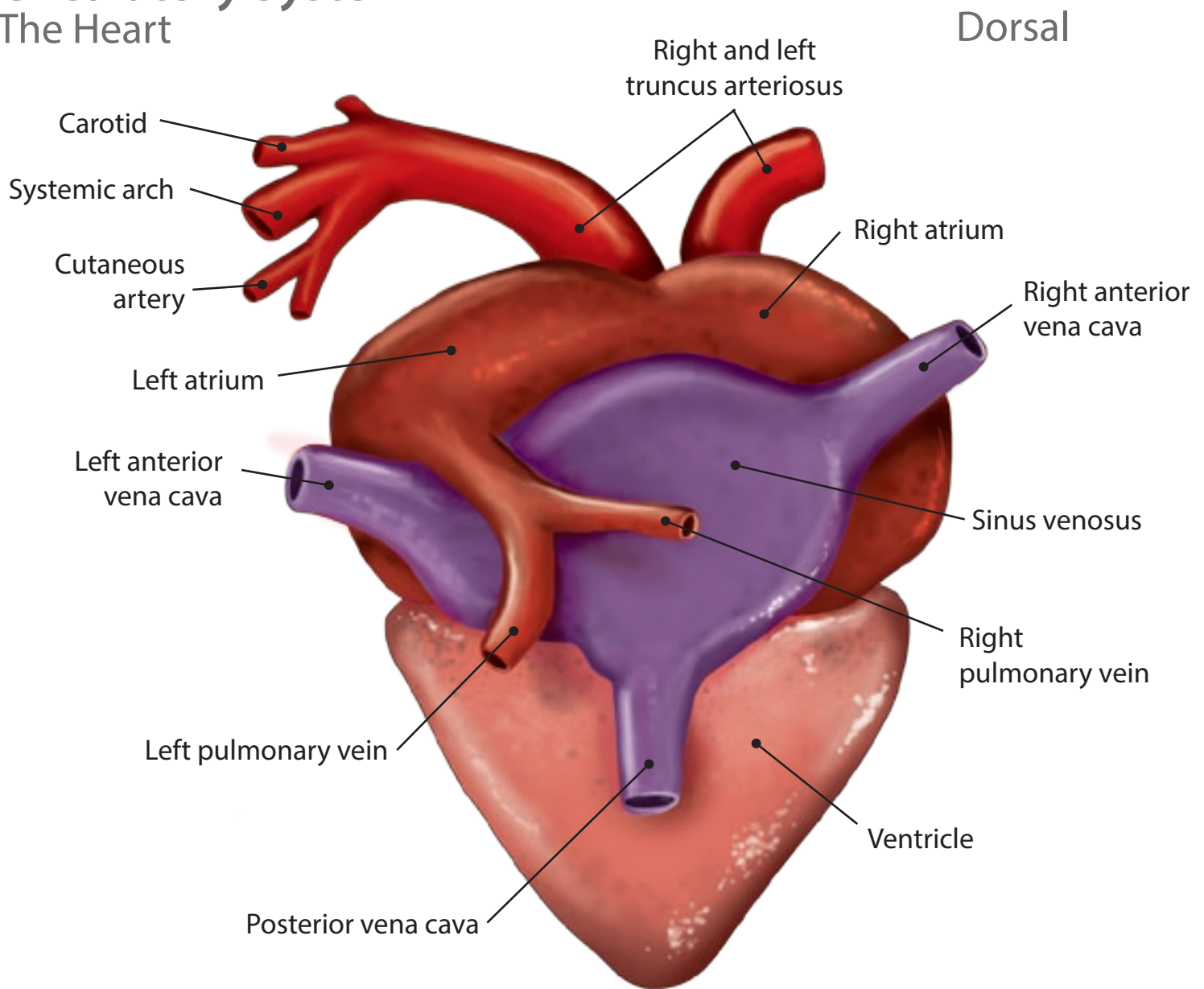


# Male Urogenital System



# Circulatory System

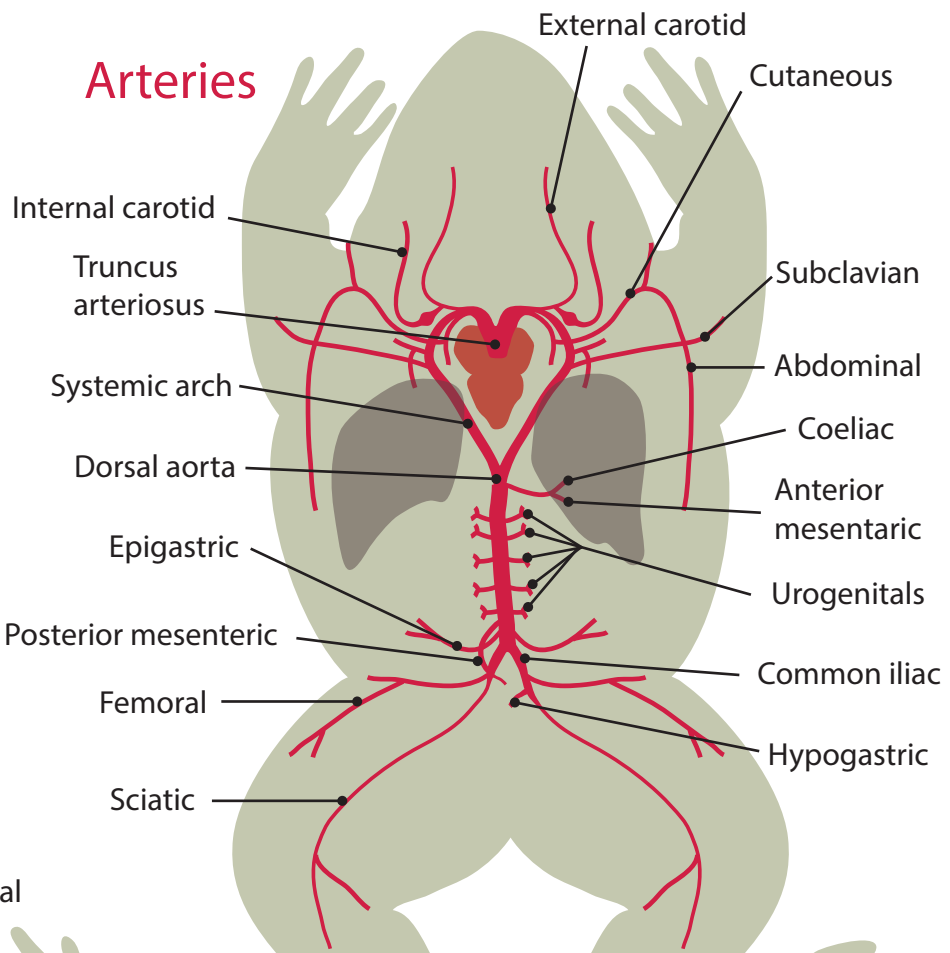
## The Heart



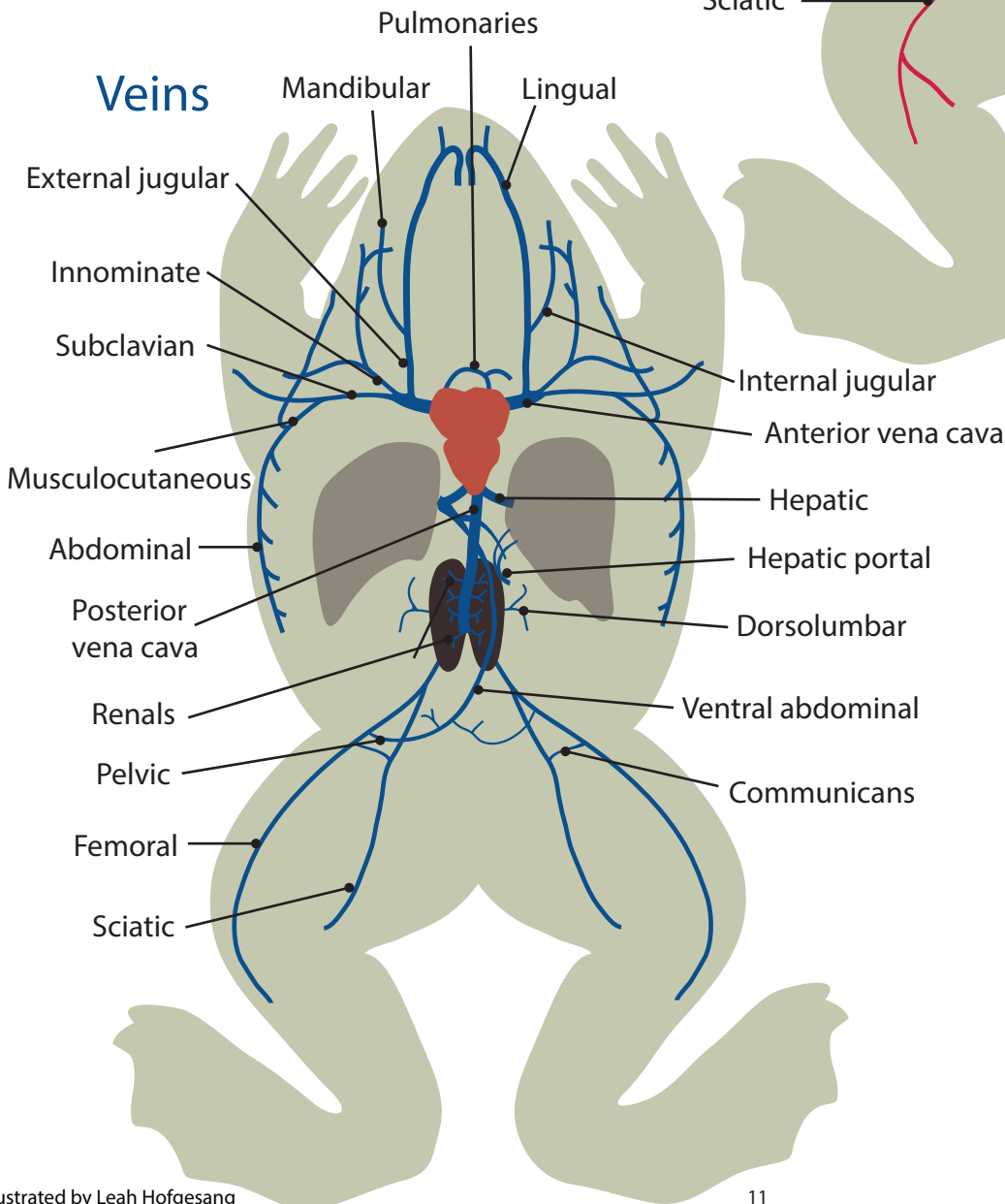
# Circulatory System

## Arteries and Veins

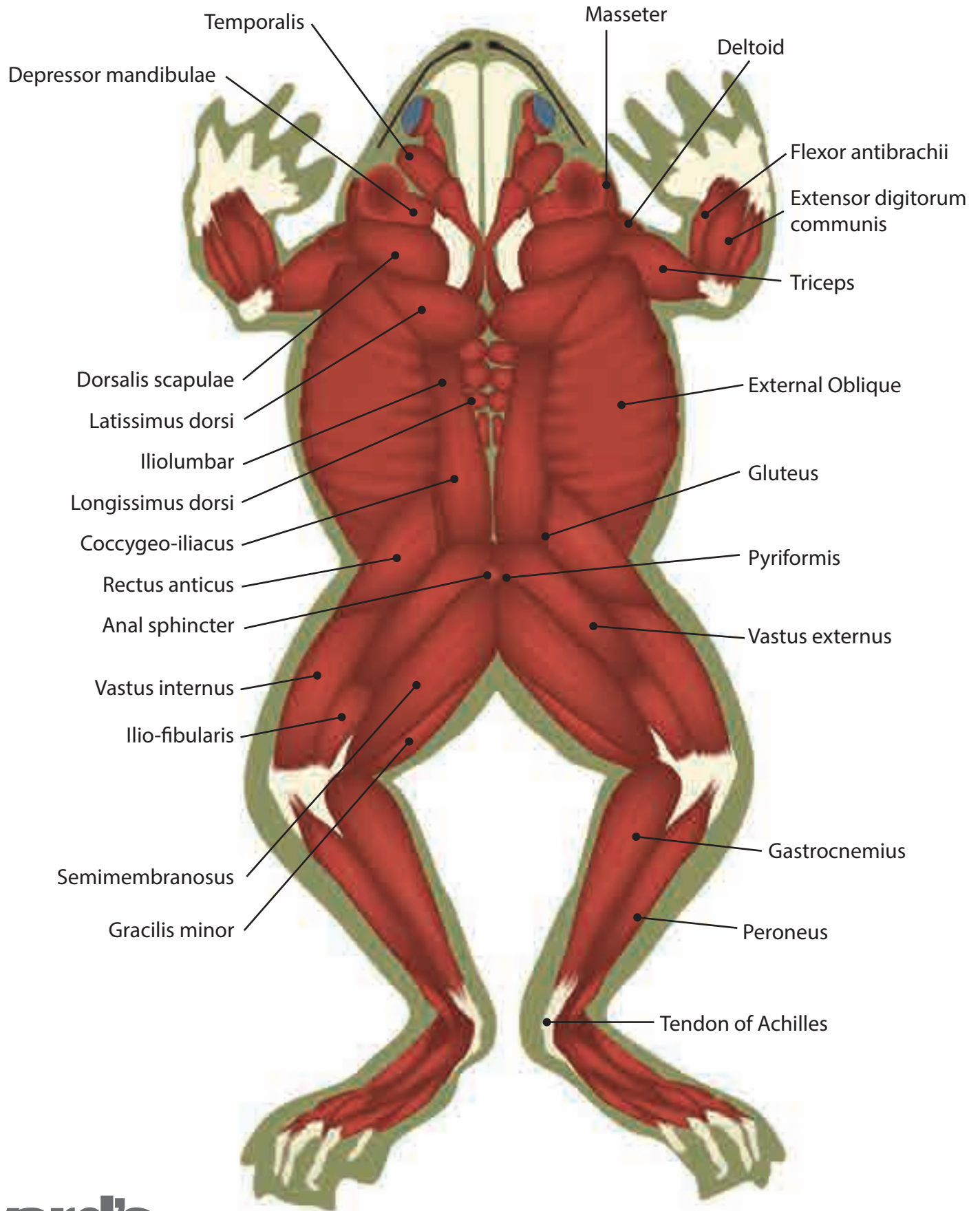
### Arteries



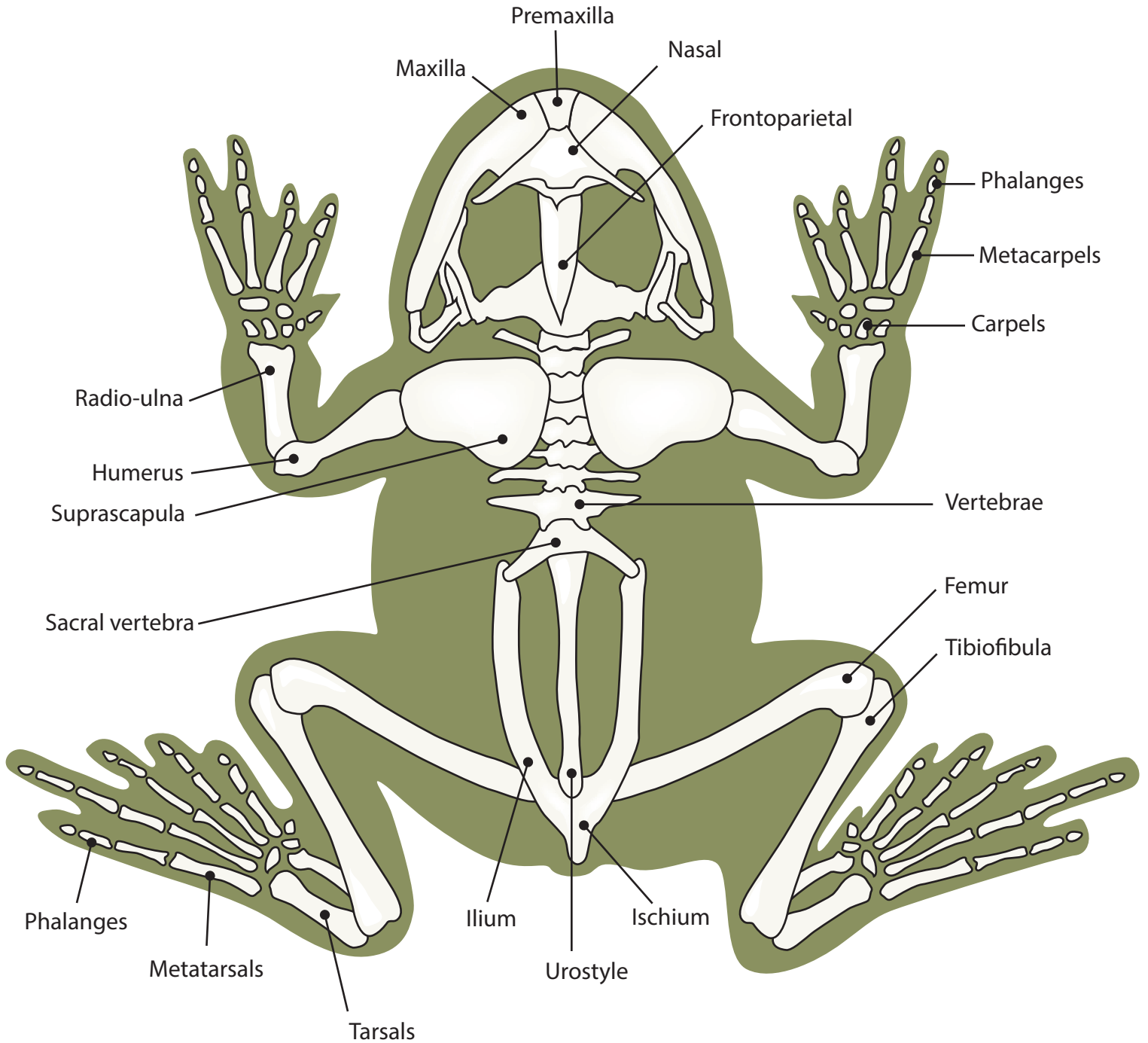
### Veins



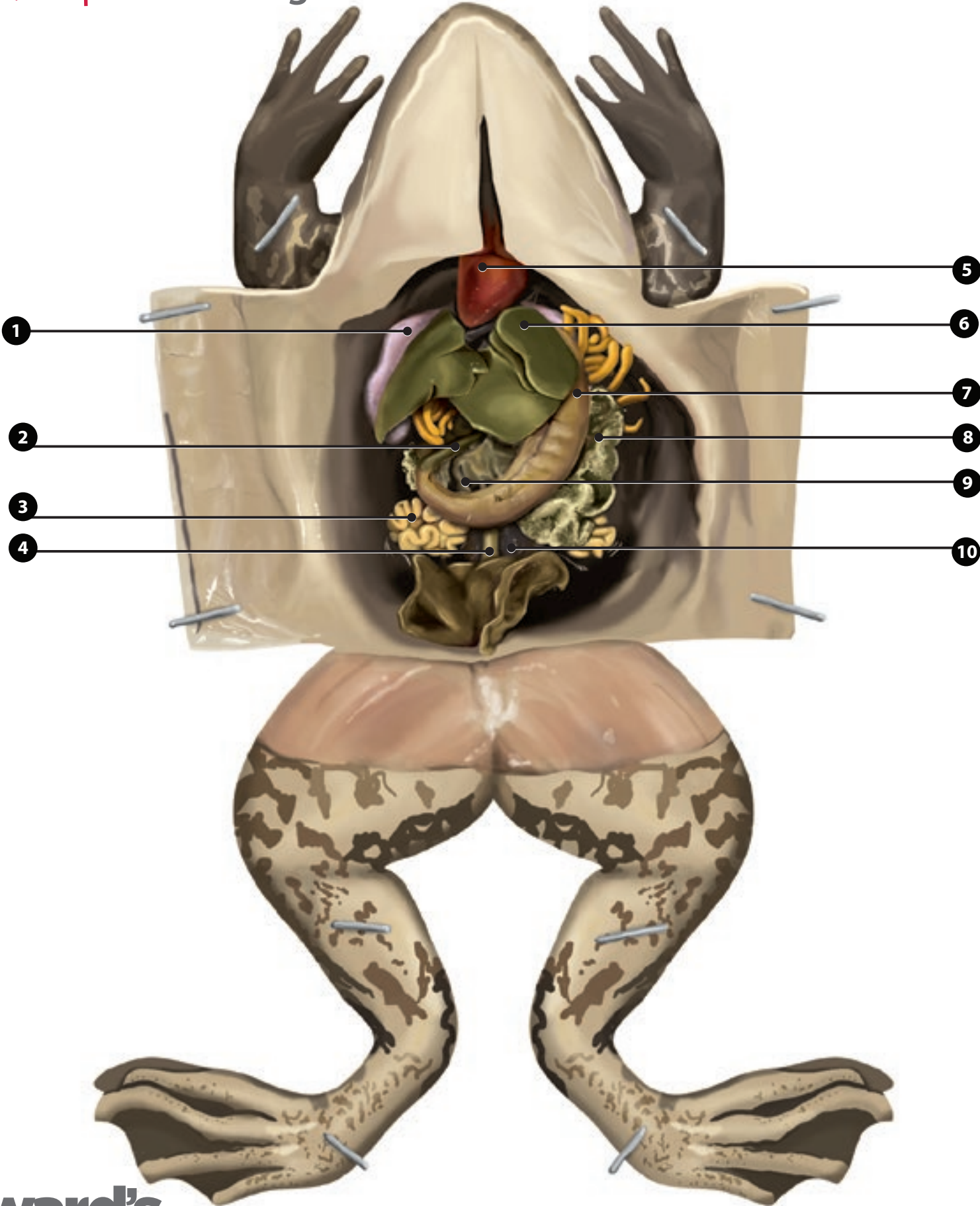
# Dorsal Muscular System



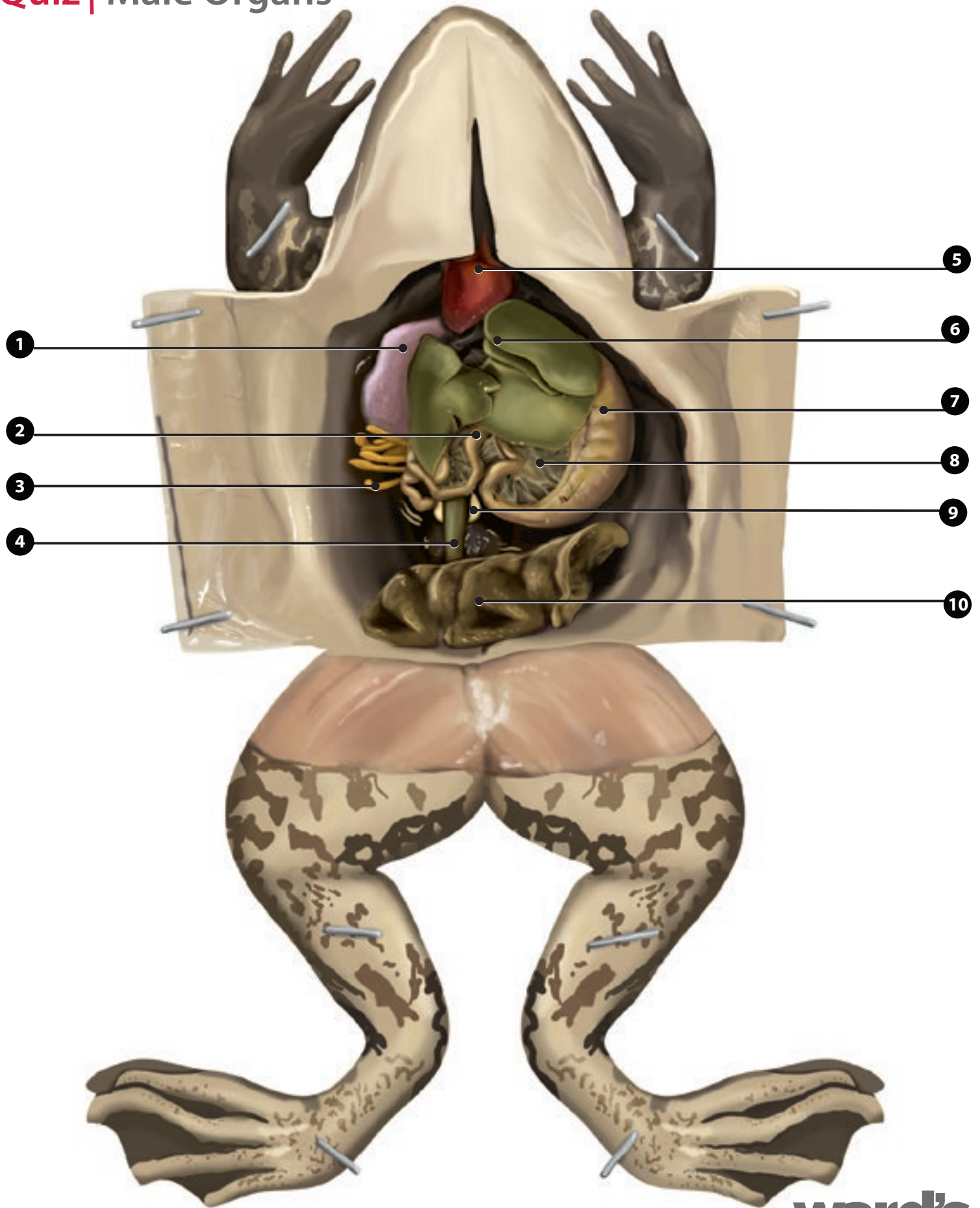
# Skeletal System



# Quiz | Female Organs



# Quiz | Male Organs





# Quiz | Answer Key

## Female Anatomy

1. Right lung
2. Small intestine
3. Oviduct
4. Large intestine
5. Heart
6. Liver
7. Stomach
8. Ovary
9. Mesentary
10. Kidney

## Male Anatomy

1. Right lung
2. Small intestine
3. Fat body
4. Large intestine
5. Heart
6. Liver
7. Stomach
8. Mesentary
9. Testis
10. Bladder